

DMRT2 Antibody (Center)
Purified Rabbit Polyclonal Antibody (Pab)
Catalog # AP21775c**Specification**

DMRT2 Antibody (Center) - Product Information

Application	WB,E
Primary Accession	Q9Y5R5
Reactivity	Human
Host	Rabbit
Clonality	polyclonal
Isotype	Rabbit IgG
Calculated MW	61814

DMRT2 Antibody (Center) - Additional Information**Gene ID** 10655**Other Names**

Doublesex- and mab-3-related transcription factor 2, Doublesex-like 2 protein, DSXL-2, DMRT2, DSXL2

Target/Specificity

This DMRT2 antibody is generated from a rabbit immunized with a KLH conjugated synthetic peptide between 357-392 amino acids from the Central region of human DMRT2.

Dilution

WB~~1:2000

E~~Use at an assay dependent concentration.

Format

Purified polyclonal antibody supplied in PBS with 0.09% (W/V) sodium azide. This antibody is purified through a protein A column, followed by peptide affinity purification.

Storage

Maintain refrigerated at 2-8°C for up to 2 weeks. For long term storage store at -20°C in small aliquots to prevent freeze-thaw cycles.

Precautions

DMRT2 Antibody (Center) is for research use only and not for use in diagnostic or therapeutic procedures.

DMRT2 Antibody (Center) - Protein Information**Name** DMRT2**Synonyms** DSXL2

Function Transcriptional activator that directly regulates early activation of the myogenic determination gene MYF5 by binding in a sequence-specific manner to the early epaxial enhancer element of it. Involved in somitogenesis during embryogenesis and somite development and differentiation into sclerotome and dermomyotome. Required for the initiation and/or maintenance of proper organization of the sclerotome, dermomyotome and myotome (By similarity).

Cellular Location

Nucleus {ECO:0000255|PROSITE-ProRule:PRU00070}.

Tissue Location

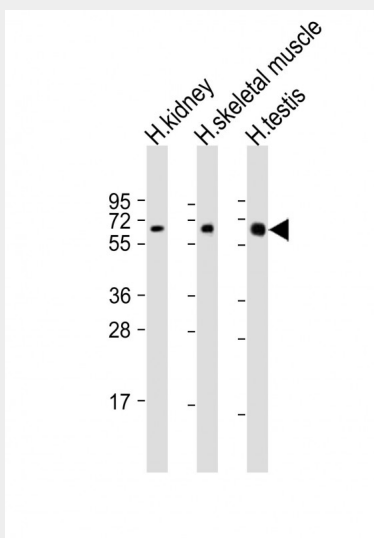
Expressed in testis, kidney and skeletal muscle.

DMRT2 Antibody (Center) - Protocols

Provided below are standard protocols that you may find useful for product applications.

- [Western Blot](#)
- [Blocking Peptides](#)
- [Dot Blot](#)
- [Immunohistochemistry](#)
- [Immunofluorescence](#)
- [Immunoprecipitation](#)
- [Flow Cytometry](#)
- [Cell Culture](#)

DMRT2 Antibody (Center) - Images



All lanes : Anti-DMRT2 Antibody (Center) at 1:2000 dilution Lane 1: human kidney lysate Lane 2: human skeletal muscle lysate Lane 3: human testis lysate Lysates/proteins at 20 µg per lane. Secondary Goat Anti-Rabbit IgG, (H+L), Peroxidase conjugated at 1/10000 dilution. Predicted band size : 62 kDa Blocking/Dilution buffer: 5% NFD/MTBST.

DMRT2 Antibody (Center) - Background

Transcriptional activator that directly regulates early activation of the myogenic determination gene MYF5 by binding in a sequence-specific manner to the early epaxial enhancer element of it. Involved in somitogenesis during embryogenesis and somite development and differentiation into

sclerotome and dermomyotome. Required for the initiation and/or maintenance of proper organization of the sclerotome, dermomyotome and myotome (By similarity).

DMRT2 Antibody (Center) - References

Raymond C.S.,et al.Hum. Mol. Genet. 8:989-996(1999).

Ottolenghi C.,et al.Genomics 64:179-186(2000).

Calvari V.,et al.Genomics 65:203-212(2000).

Humphray S.J.,et al.Nature 429:369-374(2004).

Mural R.J.,et al.Submitted (SEP-2005) to the EMBL/GenBank/DDBJ databases.